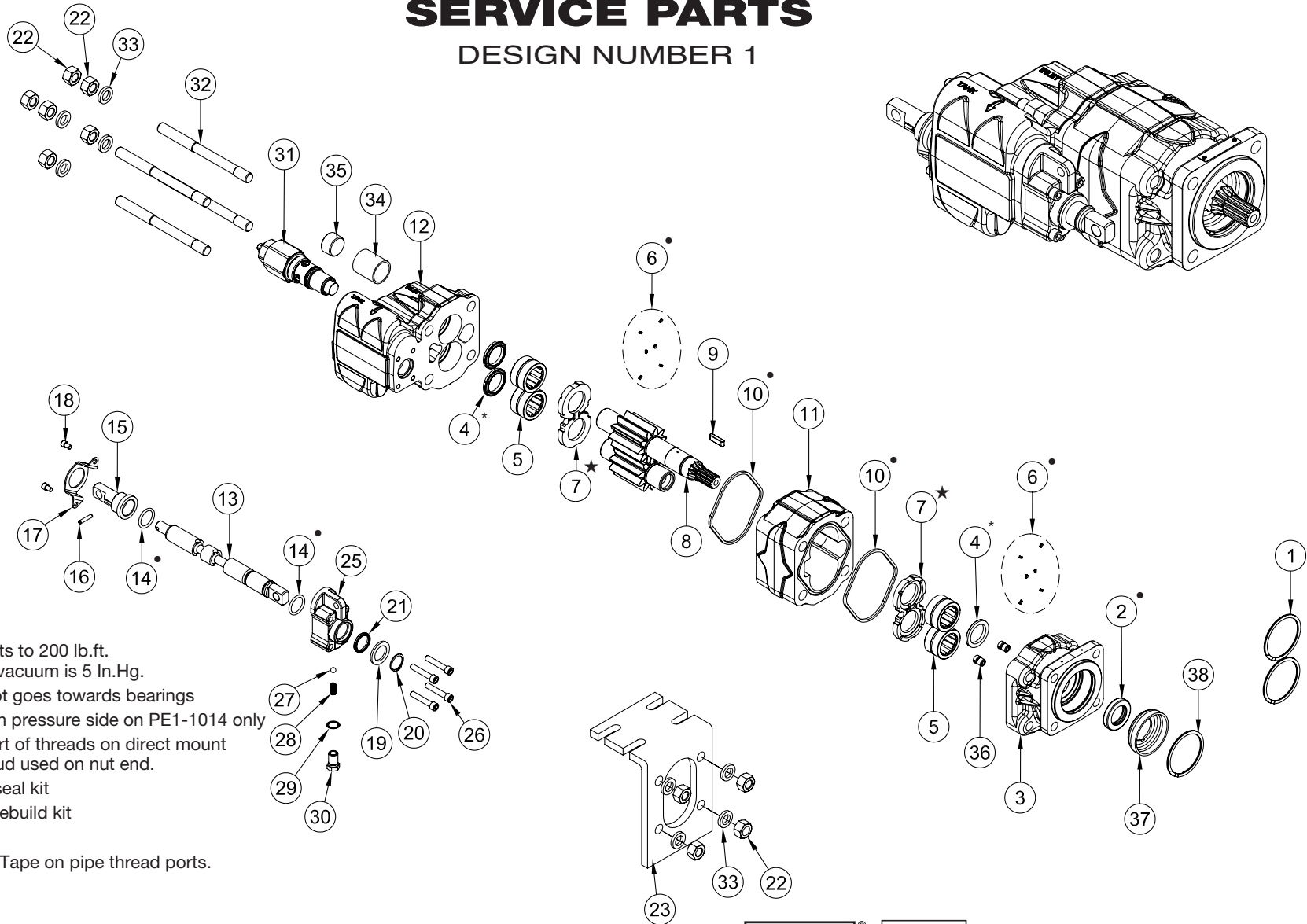


# E/EH SERIES DUMP PUMP SERVICE PARTS

DESIGN NUMBER 1



NOTE: Torque bolts to 200 lb.ft.  
Maximum vacuum is 5 In.Hg.

- \* Ring seal slot goes towards bearings
- \*\* Hole goes on pressure side on PE1-1014 only
- \*\*\* "Coined" part of threads on direct mount extended stud used on nut end.
- Included in seal kit
- ,★ Included in rebuild kit

Do not use Teflon Tape on pipe thread ports.



**Muncie Power Products, Inc.** Member of the Interpump Hydraulics Group  
General Offices and Distribution Center • P.O. Box 548 • Muncie, IN 47308-0548  
(765) 284-7721 • FAX (765) 284-6991 • E-mail info@munciepower.com  
Web site <http://www.munciepower.com>

Drive Products, Exclusive Agents for Canada, ISO Certified by an Accredited Registrar



# E/EH SERIES DUMP PUMP SERVICE PARTS

Item	Description	Qty	Muncie Number
1	Snap Ring Remote Mount	2	PE1-1004
2	Shaft Seal Remote Mount	2	PE1-1005
	Shaft Seal Direct Mount	1	PL1-1005
3	Front Cover Direct Mount	1	PE1-1007-KLXXX
	Front Cover Remote Mount	1	PE1-1007-RSXXX
4	Ring Seal	3	PL1-1008
5	Bearings	4	PL1-1013
6	Pocket Seals (12 pieces)	1	PS1-1009-EK
7	Wear Plates Remote Mount	2	PE1-1014 *
	Wear Plates Direct Mount	2	PL1-1014
8	Gear Set 1 Round 23GPM Remote Mount	1	PE1-1016-K01-23-2
	Gear Set 1 Round 27GPM Remote Mount	1	PE1-1016-K01-27-2
	Gear Set 7/8 - 13T 23GPM Direct Mount	1	PE1-1016-S02-23-2
	Gear Set 7/8 - 13T 27GPM Direct Mount	1	PE1-1016-S02-27-2
9	Key Remote Mount (0.25x0.375x1.25)	2	PS1-1017
10	Body Seal Front Cover	2	PL1-1012
11	Body 23GPM	1	PE1-1025-23XX
	Body 27GPM	1	PE1-1025-27XX
12	Rear Cover Direct Mount	1	NA
	Rear Cover Remote Mount	1	NA
13	Valve Spool	1	NA
14	Spool O-Ring	2	PE1-1214-V
15	End Stop Cap	1	PE1-1206-V
16	Stop Pin	1	PS1-1216-V
17	Stop Spool Bracket	1	PE1-1207-V
18	Bracket Screws (1/4-20UNC x 3/8)	2	PS1-1218-V
19	Retainer Ring	1	PE1-1201-V
20	Snap Ring	1	PE1-1202-V
21	Retainer Wiper Seal Ring	1	PE1-1204-V
22	Nut (5/8-11 UNC)	4 or 6	PE1-1020
23	Remote Mounting Bracket	1	B1235, B1235A
25	Spool Cover	1	PE1-1203-V
26	Spool Cover Screws	4	PE1-1205-V
27	Detent Ball	1	PS1-1227-V
28	Detent Spring	1	PS1-1228-V
29	Detent Lockwasher	1	PS1-1229-V
30	Detent Retainer	1	PS1-1230-V
31	Relief Valve Assembly	1	PE1-1231-V
32	Capscrew 23GPM (5/8-11UNC x 7)	4	PE1-1028-23
	Capscrew 27GPM (5/8-11UNC x 7-1/2)	4	PE1-1028-27
	Stud 23GPM (5/8-11UNC x 7)	4	PE1-1028-23-S
	Stud 27GPM (5/8-11UNC x 7-1/2)	4	PE1-1028-27-S
33	Washer	4 or 8	PE1-1230
34	Conversion Sleeve E	1	AA-1257
	Conversion Sleeve EH	1	AA-1257-2
35	Pipe Plug (1")	1	HHPP-16Z
36	Check Valve Assembly (direct mount)	2	PS1-1010
37	Retainer/Spacer (direct mount)	1	PE1-1002-D
38	Snap Ring Direct Mount	1	PL1-1001

Kits	Qty	Muncie Number
N.S. Seal & O-Ring Kit Direct Mount E/EH 23/27 GPM	kit	GSK-E-121
Seal & O-Ring Kit Remote Mount E/EH 23/27 GPM	kit	GSK-E-122
Rebuild Kit Direct Mount E/EH 23/27 GPM	kit	RBK-E--121
Rebuild Kit Remote Mount E/EH 23/27 GPM	kit	RBK-E-122
Bearing Kit	kit	PL1-1013-K
Relief Valve Seal Kit E/EH 23/27 GPM	kit	GSK-E-12RV

\* Hole in wear plate goes on pressure side.  
Gears are only sold in sets and cannot be serviced individually.  
Rear cover and valve spool are not sold as service parts.

## AIR CYLINDER KIT: ACM302 (Fits both E/EH Series) Ports are 1/8" - 27 NPT

Item	Description	Qty	Muncie Number
1	Piston	Ass'y Only	PE1-1400-AV
2	Quad Seal (PE1-1401-AV)		
3	Spring Retainer		
4	Spring		
5	Wire Ring		
6	Spring Retainer	1	PE1-1402-AV
7	O-Ring	1	PE1-1403-AV
8	Clevis Pin	1	PE1-1404-AV
9	Snap Ring	1	PE1-1405-AV
10	O-Ring	1	PE1-1406-AV
11	Pressure Cap	1	PE1-1407-AV
12	Cap Screw	4	PE1-1408-AV

